



Transition Details

David Hayling

Kent MAN Network Operations Centre Manager

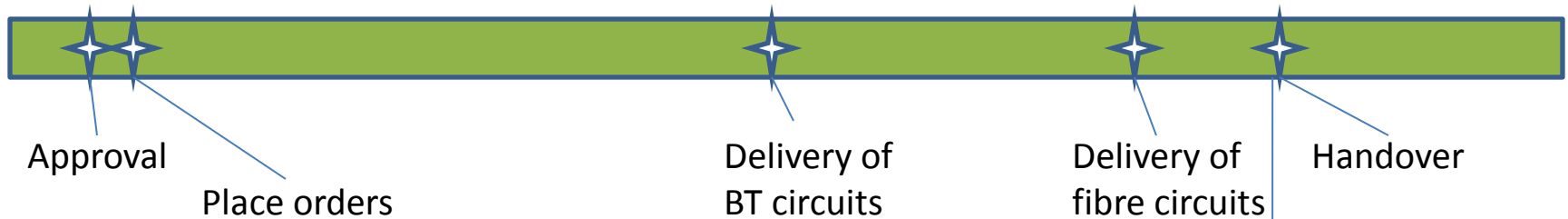
Jon Aldington

Kent MAN Business Manager

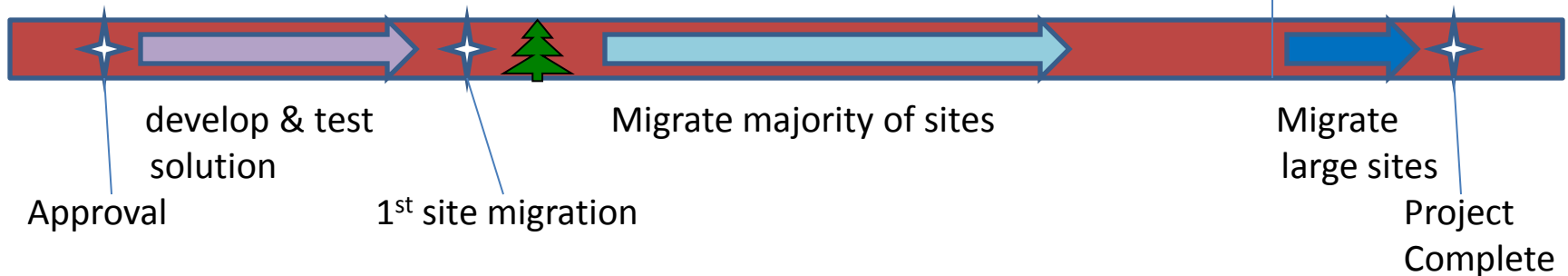
Transition Timelines

Oct 10 Nov 10 Dec 10 Jan 11 Feb 11 Mar 11 Apr 11 May 11 Jun 11

KPSN 10Gbps Core Upgrade



Tertiary Education Site Migration



Migration

- 31 sites in total
- During the Jan – Apr main migration period we'll migrate ~3 sites / week
- Usually 1/day on Tue/Wed/Thu
- Site will be notified of the day
- Can pick the time of day
 - 7 – 8am suggested
- Allow for a 30 minute outage
 - Although should be much less unless there are problems



Technical details

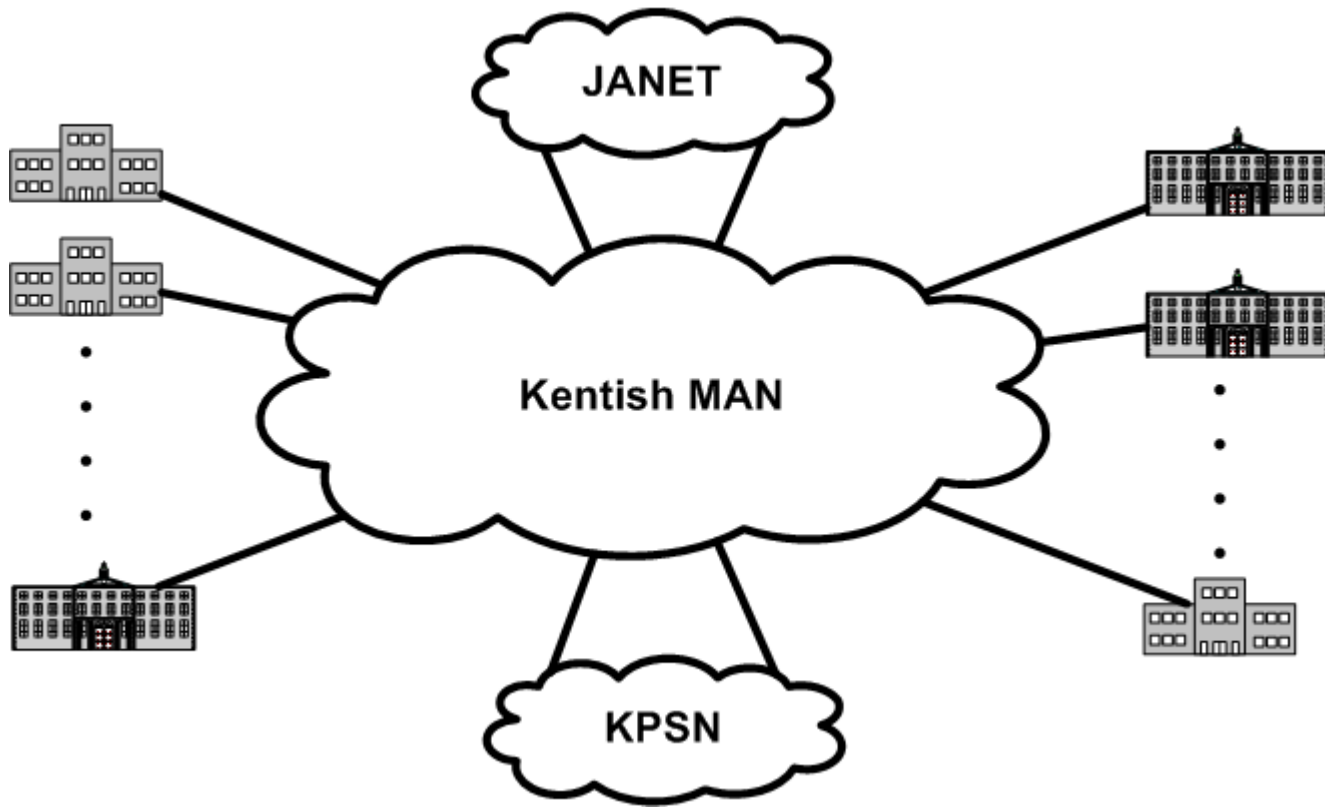


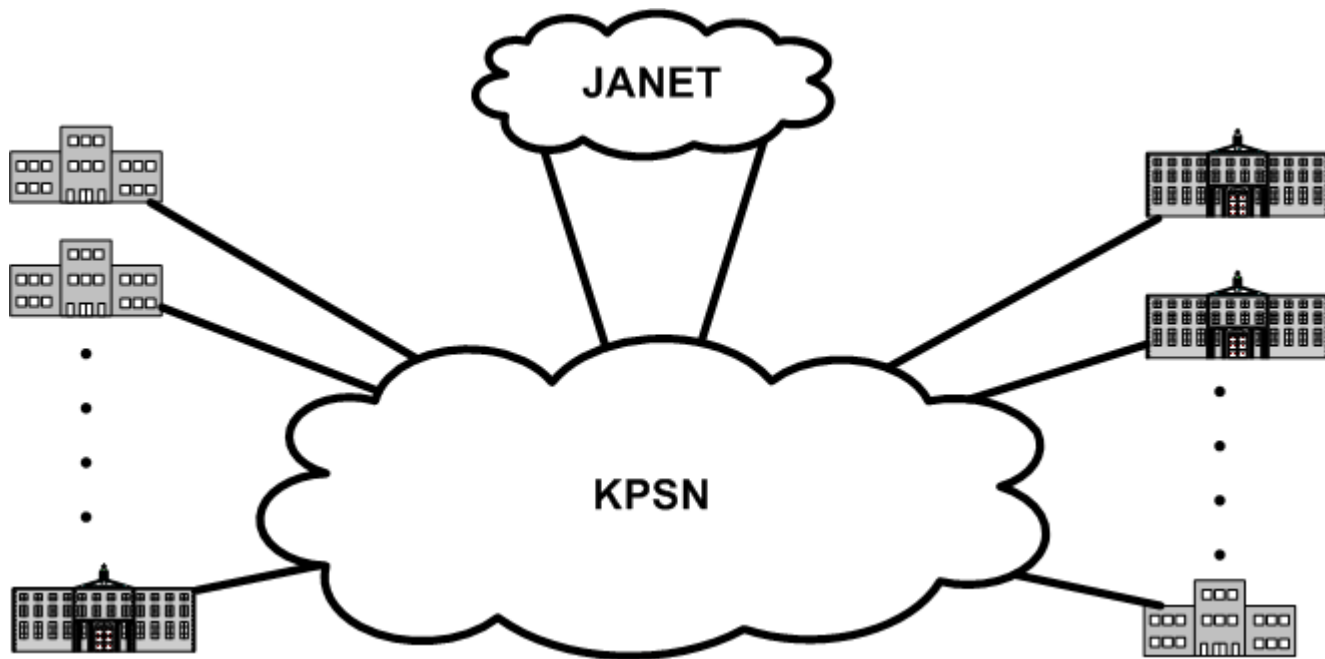
- For most sites a CPE (Customer Premises Equipment) router will be installed
- Up to 2U of rack space will be required for this router
 - Plus 1U for the new BT NTE
 - Please let us know now if this might be a problem
- Allows remote monitoring / management of link + additional options (more later)
- The new CPE router will be managed by Unisys (KPSN provider)
- Existing JANET managed router service (if you have one) is unaffected.
 - This is an extra item of equipment.

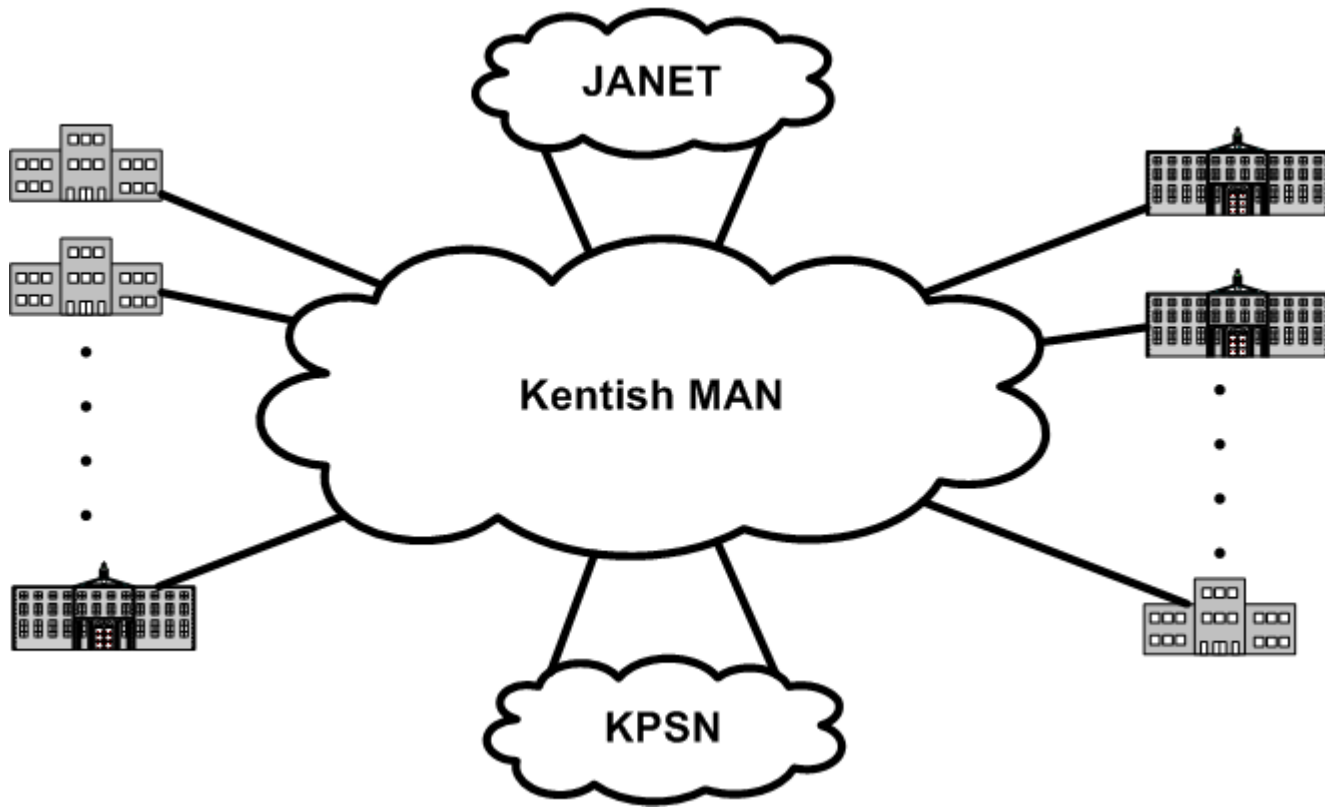
Technical details

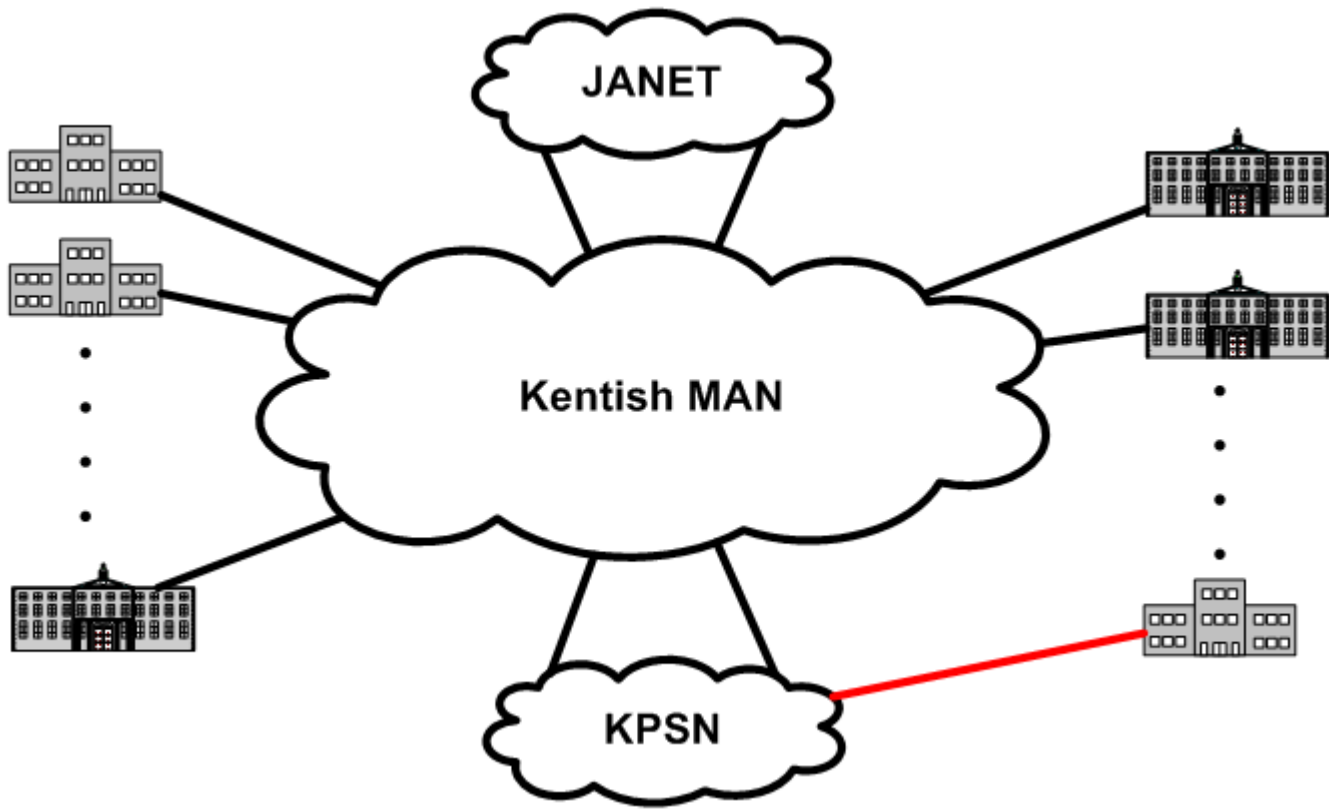


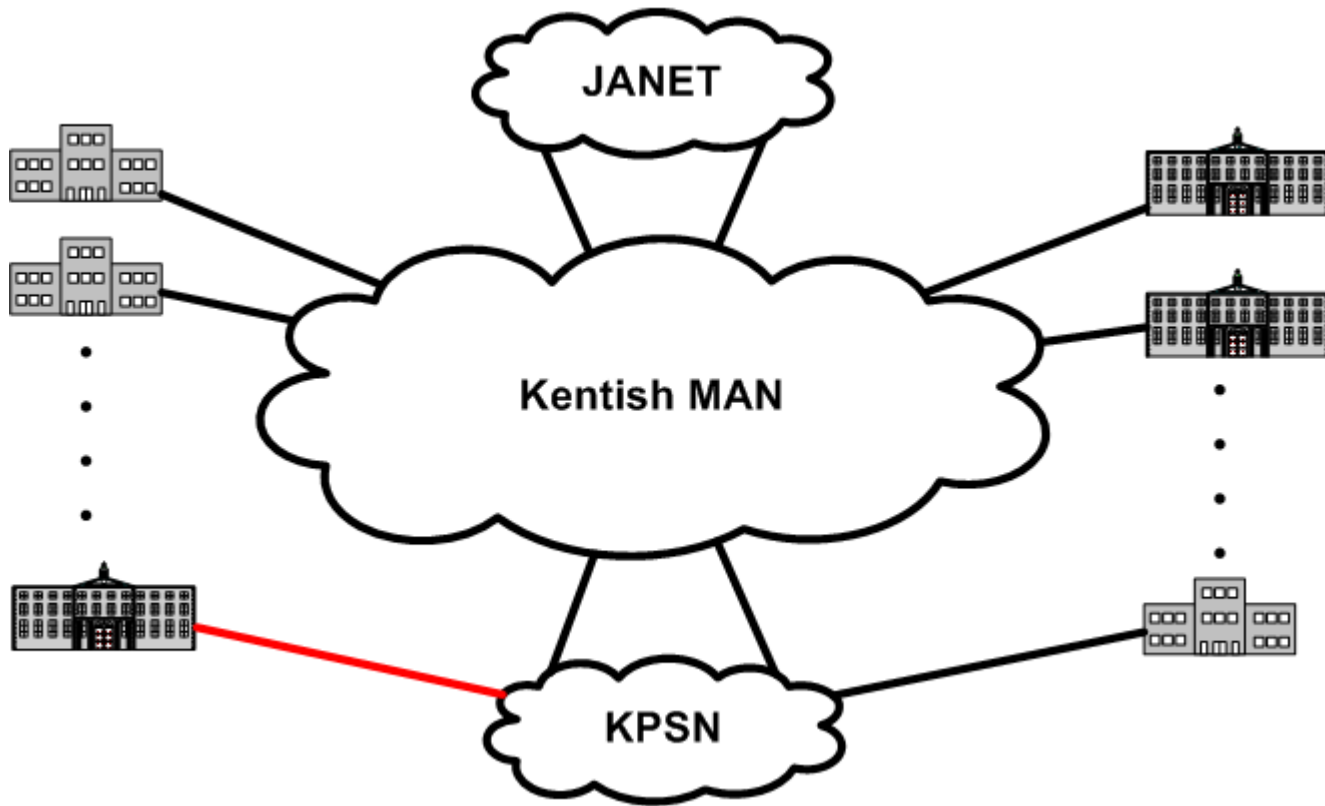
- No changes to IP addresses
 - Exactly the same subnets will be routed to your sites
- For cut-over, the Kentish MAN circuit and the KPSN circuit will both be live
- Simply unplug from the Kent MAN circuit and plug into the new KPSN CPE router
 - New connection will be detected and routes will fail over automatically within minutes
- Easy fall-back, just plug back into the Kentish MAN circuit

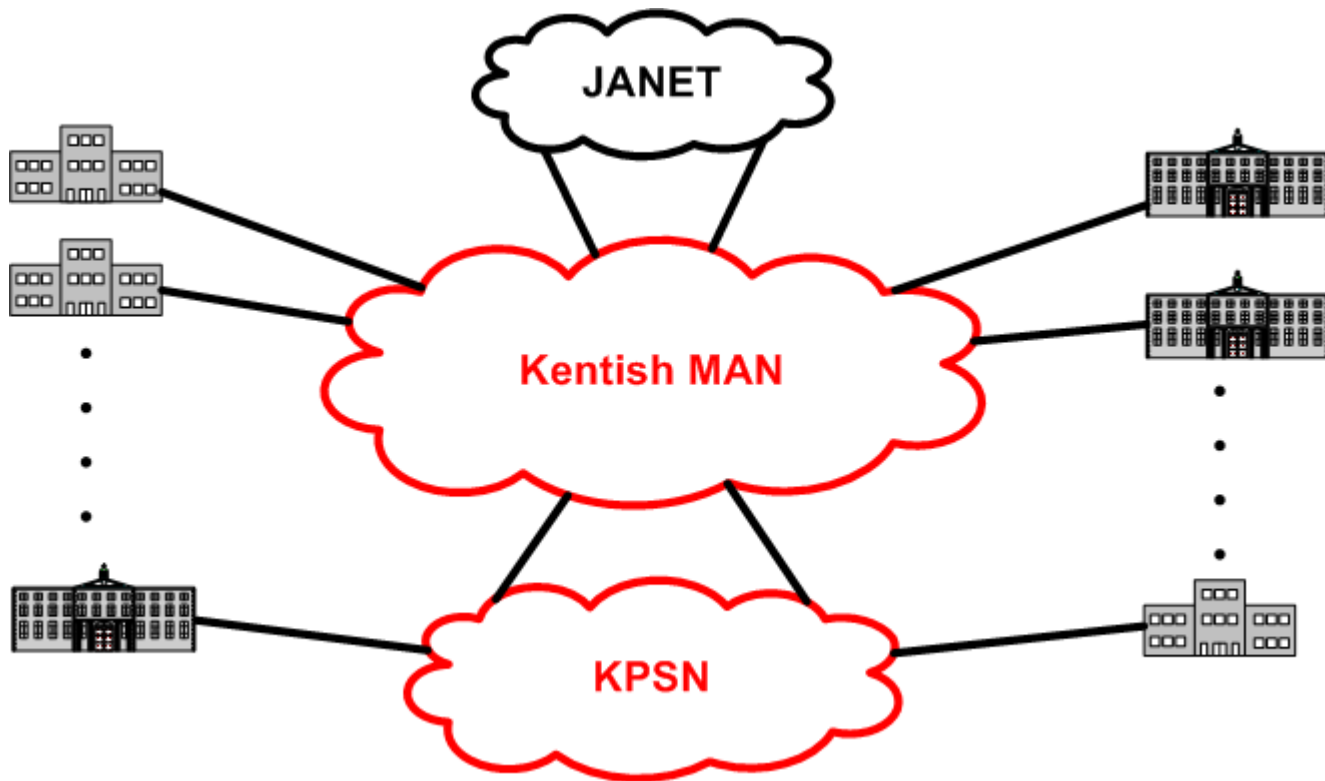


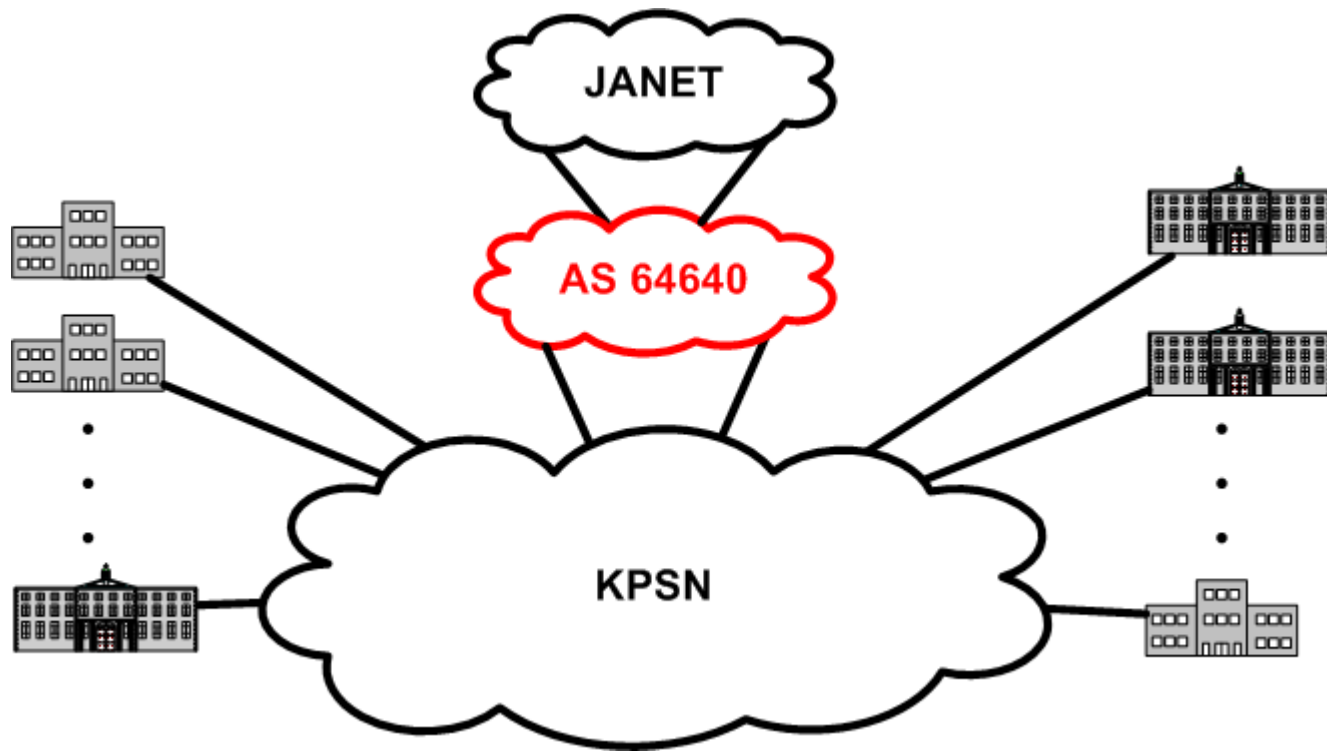


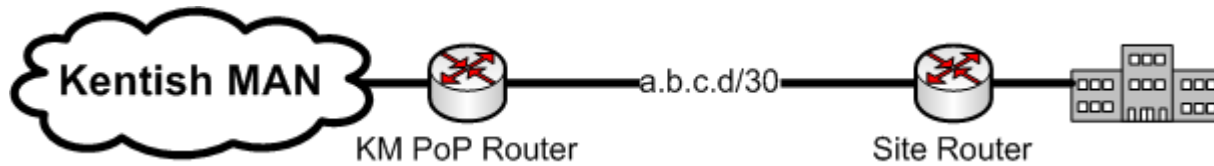


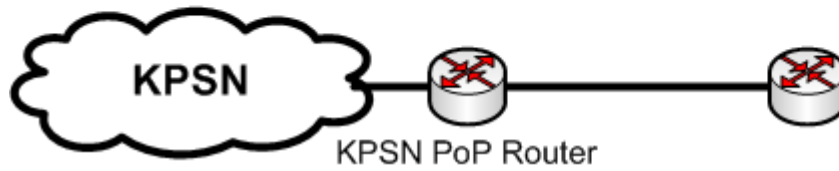
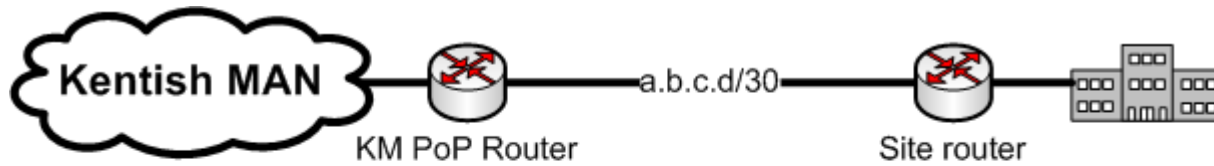


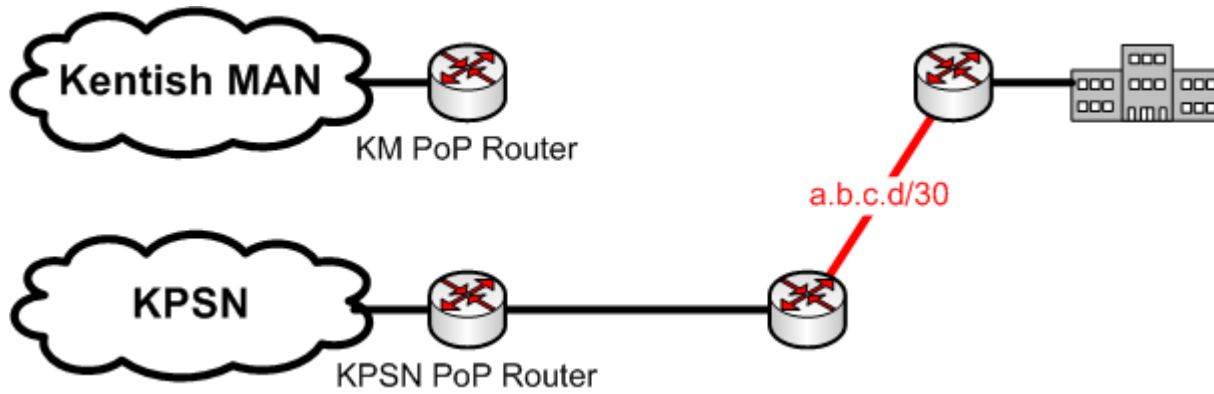












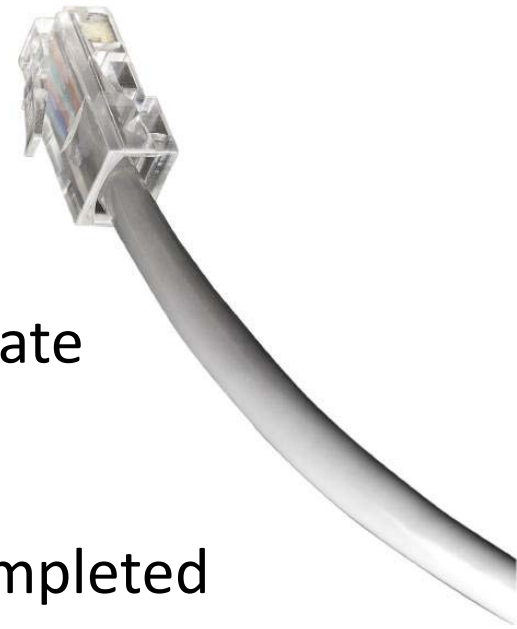
Sites check list

- Rack space
 - 2 U for CPE
 - 1 ~ 2 U for BT NTE
- 2 x ICE13 power connector
 - On the UPS
- Long patch leads
 - If necessary
- Site router check
 - Config backed up
 - Recently power cycled
 - Password available



Migration timeline for an individual site

- ~8 weeks before – notification of migration date
- ~8 weeks before – new circuit ordered
 - BT site survey shortly afterwards
- ~2 weeks before – new circuit connection completed
 - Date confirmed
- 1-2 weeks before - CPE equipment installed, configured and tested
- On the day
 - Simple reconnection of patch leads
 - By institution staff or Kent MAN staff
- 1-6 weeks after cut-over, BT may wish to recover the old (Kentish MAN) NTE



Support

– who to contact



- Before the cutover, contact Kent MAN as usual
- After the cutover, contact the JANET service desk
 - A “fault reporting” letter will be sent with details a few weeks before the cutover
- We will be flexible during the cutover period – either organisation will help
- You should not contact KPSN or Unisys at any stage, all issues are handled through JANET or Kent MAN

Contractual Changes

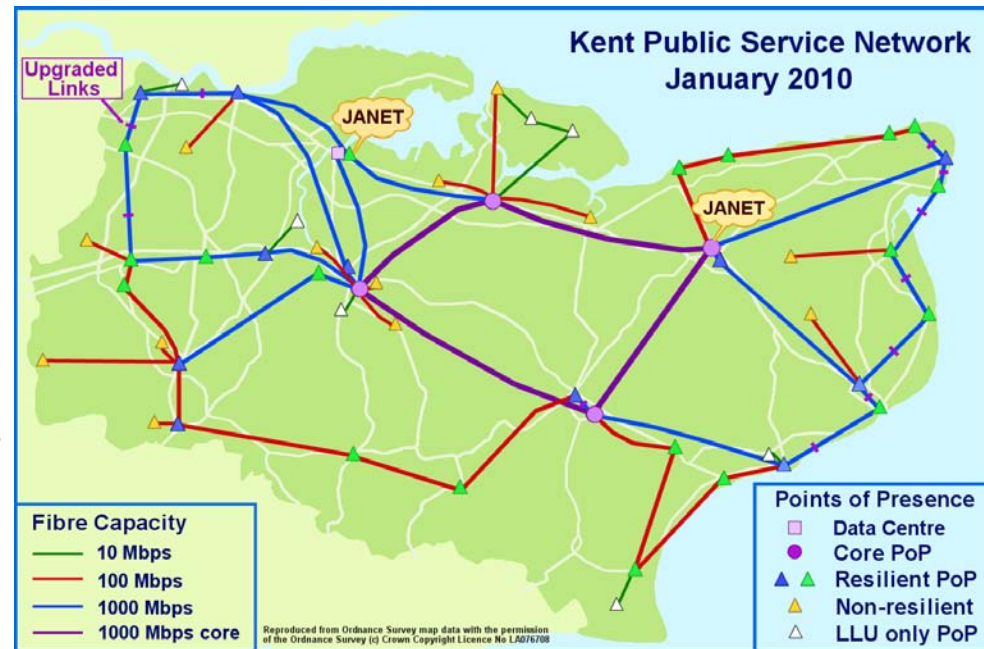


- For JANET primary connections, there's no change
 - Your contract is and will continue to be with JANET(UK)
 - Some FE sites may see a modest reduction in cost
- For secondary connections, your contract was with Kent MAN, but will migrate to JANET(UK) on the day of cut-over
 - Some sites see a decrease in cost, a few see a modest increase
 - All migration costs will be paid for by JANET(UK)
 - We won't charge you twice while both circuits are live
 - JANET(UK) has agreed that any cost increases will only be charged from 1st August 2011

KPSN Advantages

Resilience

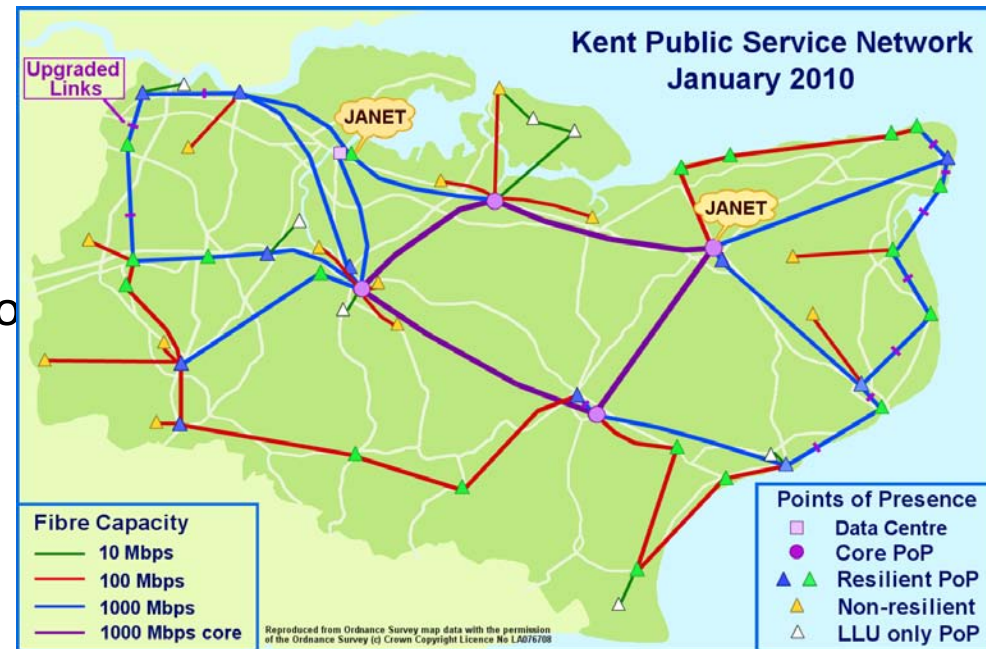
- Most KPSN PoPs have are dual connected to the KPSN backbone
- No impact if one of these connections fails
- Good resilience for all major towns in Kent



New Opportunities

Connectivity for additional sites

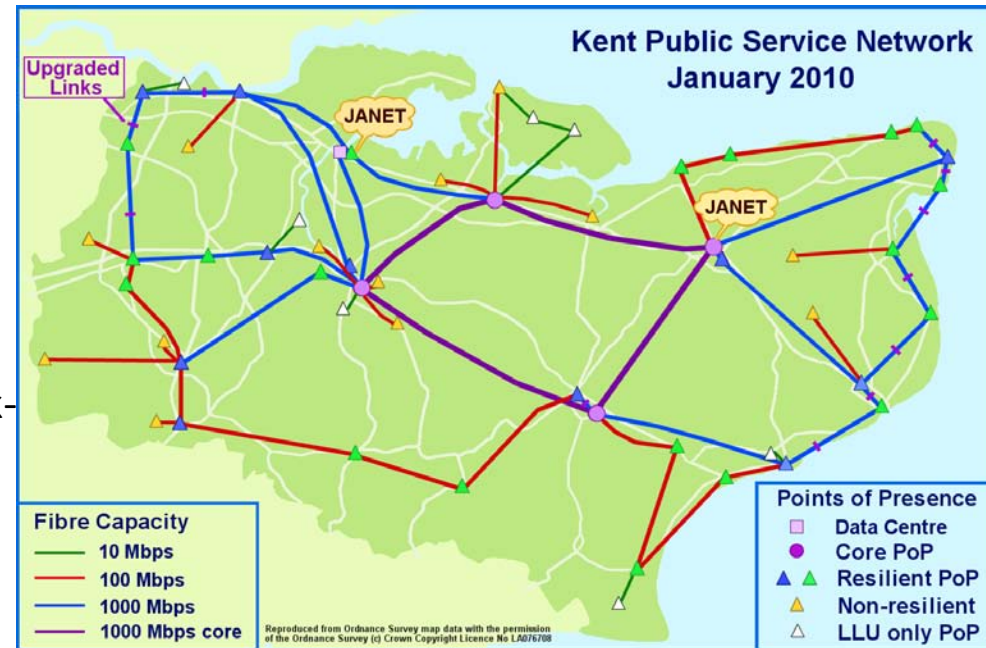
- KPSN has a PoP in every corner of Kent
- For additional sites, probably more cost-effective than a point-to-point circuit
 - JANET(UK) now only charges the cost of the access circuit to connect additional sites
 - Typical cost for a 100Mbps connection around £4k up-front and £4k / year
 - Can also stretch beyond Kent boundary at additional cost



New Opportunities

Resilient connectivity

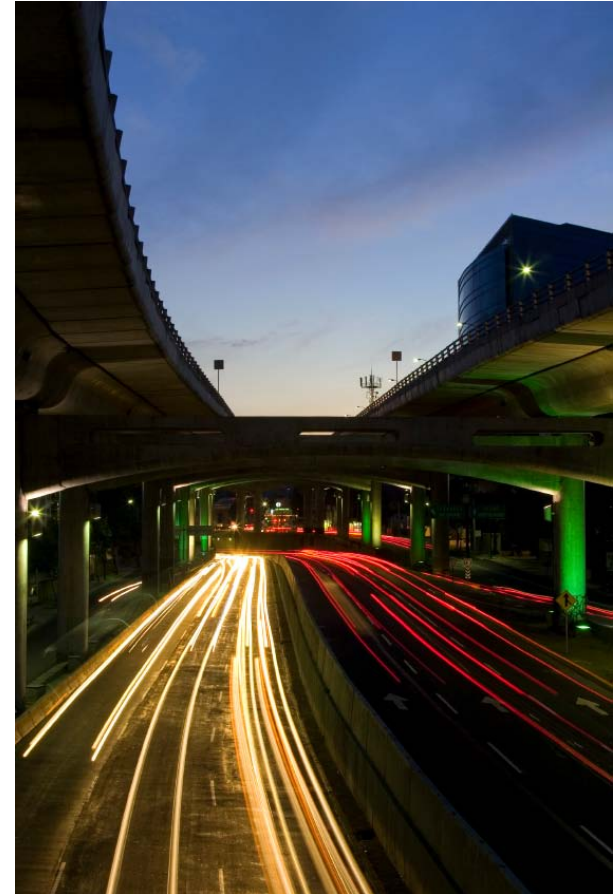
- KPSN has a PoP close to most sites
 - ... and another one not much further away
 - So an additional resilient connection to a different KPSN PoP can be made available
 - The institution pays
 - Cost around £4k up front and £5k-£8k annually for 100Mbps for most sites
 - May not give 100% resilience (part of fibre route may be common), although options are available usually at higher cost



New Opportunities

SDSL

- KPSN also has an SDSL option
 - Price between ADSL and 10Mbps fibre
 - 2Mbps – 10+Mbps symmetric connection
 - Available from many exchanges
 - Uncontended, direct connection to KPSN
 - Lower latency than ADSL
 - Better performance (doesn't degrade at busy times)
 - Generally more reliable than ADSL
 - Symmetric
 - May be a good fit for smaller sites



New Opportunities



Virtual point-to-point circuits

- KPSN can also offer a virtual point-to-point circuit between sites if you have multiple sites with connections
- Presented as a Layer 2 “virtual wire”
- Can be set up as specific ports on CPE router
 - Or VLAN tagged traffic

New Opportunities

- Project priority is the successful migration of existing connections
- Additional connections, resilient connections, SDSL and virtual point-to-point circuits can be ordered once the migration nears completion



The Future

- JANET(UK) and the Kent MAN Board have agreed to fund a new post
 - Ensure everything runs smoothly in the new regime
 - Act as liaison between colleges/universities, JANET(UK), and KPSN
 - Act as a focal point for ICT / networking in Kent
 - Example – more meetings like this on broader ICT topics
 - Investigate other opportunities (example: local / metro dark fibre connectivity)
 - Facilitate shared services across the community



An Opportunity

- Kent MAN connected sites are invited to become Associates of Kent MAN
 - Any connected institution can join
 - Cost between £100 and £1,000 / year depending on the size of the institution
 - Attend Exec & Board meetings
 - Influence the future of the organisation
 - Details on the KentMAN website or contact Jon Aldington for details



Who to contact



- Fault / service requests – usual place
 - support@kentman.ac.uk or 01227-782640
 - service@ja.net or 01235-822200
 - This includes during the cutover period
- Questions about the project
 - Kent MAN – Jon Aldington
 - Jon.Aldington@canterbury.ac.uk or 01227-782341
 - JANET(UK) – John Littledale
 - John.Littledale@ja.net or 01235-822303



Thank you